

Reverse behind a car

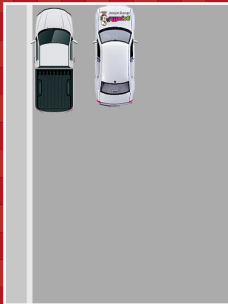


Objective:

To finish close to the curb and no more than 2 car lengths away from the car you are parking behind.

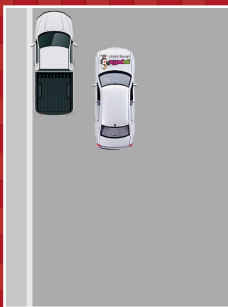
You can move forward if you need further adjustments.

1



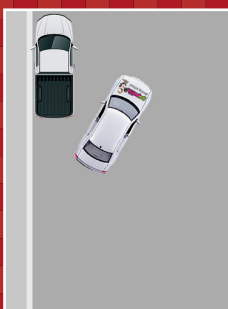
Stop about level with the car about half a metre to a metre away and secure. Go into the reverse POM routine (preparation, observation, move).

2



Reverse looking backwards until end of their car is half way through the window behind the passenger seat, turn the steering wheel 1 full turn to the left (towards the curb).

3



Continue moving slowly with plenty of observation to the rear and over the right shoulder in the blind spot. When the car is roughly at about 1 o'clock (30 degrees), turn the steering wheel 1 full turn to the right (away from the curb).

4



Continue moving back with plenty of observation to the rear and over the right shoulder. Look into your left exterior mirror and you will see the straight edge curb start to get close to the rear of the vehicle, turn your steering wheel half a turn to the right (away from the curb).

Keep the curb just poking in behind the car, making adjustments as you go, you may need to add more turn use your judgement. Stop and secure.